

VANDERBILT



SPC intruder detection

Now with special banking features

vanderbiltindustries.com



Banks are increasingly facing new security challenges with respect to protecting their customers and staff, buildings and financial operations. SPC offers advanced intrusion detection features for banking solutions.



Enhanced personnel security

Personal security devices, such as the SPC Wireless Personal Alarm, increase the confidence and security of bank and financial employees.

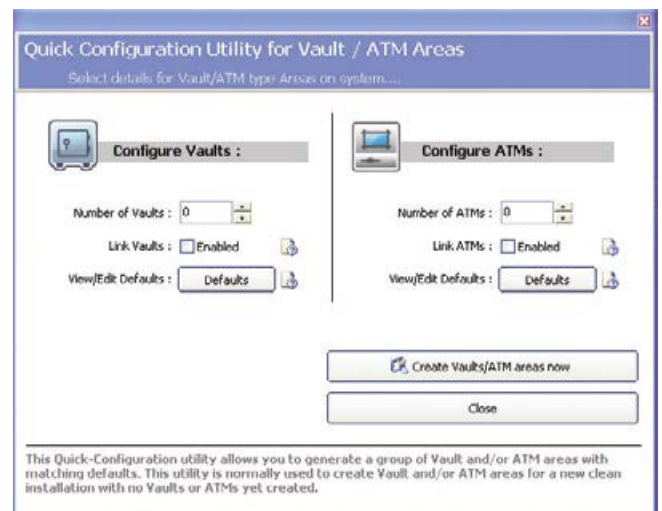


Ease of configuration with pre-defined procedures

SPC offers a set of specifically defined 'Financial' area types for ATM and Vault environments with predefined timers and enhanced security functions.

Dedicated financial features include:

- Unset duration:** Define the period of time that an ATM/vault remains unset so that the ATM/vault sets automatically
- Interlock group:** Denies access to other ATMs/Vaults if any one ATM/Vault area within a group is unset
- Dual PIN:** Requires two PINs to be entered within 30 seconds to set/unset an ATM or Vault
- All Okay:** Requires user to confirm 'All Okay' on entry or alarm is generated
- Delay interval:** Postpones the automatic delay counter for setting an ATM/Vault area



VANDERBILT

vanderbiltindustries.com

@VanderbiltInd

Vanderbilt Industries

Vanderbilt International Ltd.

Clonshaugh Business and Technology Park
Clonshaugh, Dublin D17 KV 84, Ireland

+353 1 437 2560