



# ACT

## SPC intruder detection integration

**vanderbiltindustries.com**

ACTpro is the role-based access control software suite for ACTpro hardware and streamlines the installation, management and monitoring of the ACTpro access control system. **The latest release of ACT introduces SPC integration into the system.**

### Highlights:

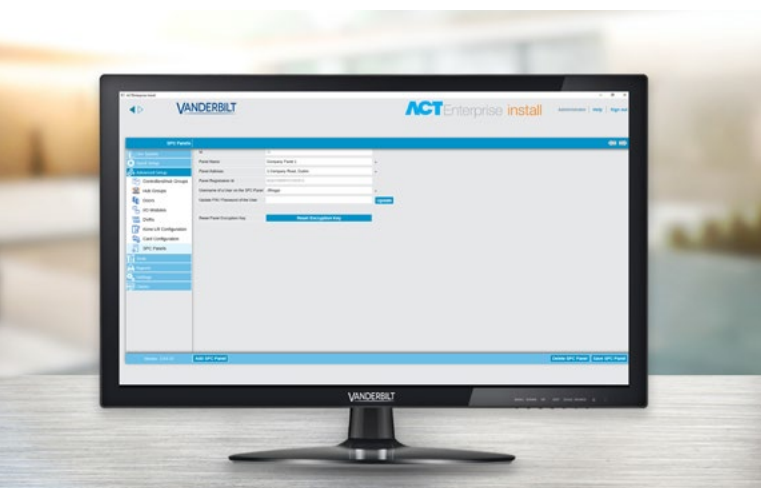
- ✓ SPC integration provides a single interface security solution
- ✓ Realtime view of SPC zone status in ACTpro
  - View SPC events in ACTpro
- ✓ Send commands to SPC set/unset, isolate/deisolate, inhibit/disinhibit and restore
- ✓ Graphical maps – overlay zones onto map
- ✓ FlexC ATS will automatically query service running on ACTpro and register its details



Integration is a key priority, with significant focus placed on enhancing Vanderbilt's functionality and reach in the market. As such, Vanderbilt's SPC intrusion system now interfaces into the Vanderbilt ACT system.

SPC protects businesses, properties, and assets. It is an intrusion detection system that offers versatile and comprehensive alarm management functionality. Vanderbilt's FlexC communications' protocol provides a highly secure multi path communications system that enables easy configuration of event transmission strategies to independent alarm organizations.

Maximize your investment in Vanderbilt systems by leveraging the power of interoperability. Vanderbilt integrated solutions provide the answers to the complex world of security by providing scalable solutions for sectors such as healthcare, industrial, retail, and much more. When your system appears complex, turn to Vanderbilt security solutions.



## VANDERBILT

[vanderbiltindustries.com](http://vanderbiltindustries.com)



@VanderbiltInd



Vanderbilt Industries

**Vanderbilt International Ltd.**

Clonshaugh Business and Technology Park  
Clonshaugh, Dublin D17 KV 84, Ireland



+353 1 437 2560