

PRODUCT LINE: ACCESS

PRODUCT NAME: ACT365 Portal

MODEL(S): 1.2.3

CATEGORY: UPDATE

CONTACT: Local Technical Support

DATE: 2019-04-16

New Features and improvements

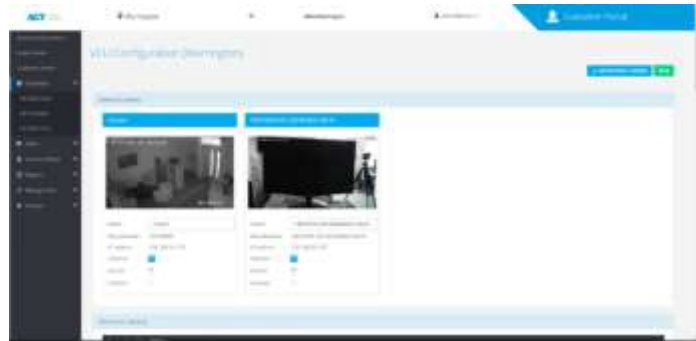
- 1) Update to Camera Discovery page
- 2) Add cameras manually
- 3) Motion Detection status added to Camera List page
- 4) Update to Camera Details page
- 5) Video Test page new layout and settings
- 6) Live View new layout
- 7) Upgraded video player on Live Video screen
- 8) Export function and buttons
- 9) Motion events added to Log Event page
- 10) Video timeline improvements
- 11) Motion Detection setup
- 12) Channel setup
- 13) Spot Monitor

1. Camera Discovery Page

- From the ACT365 VCU list page, select Configuration.



- Cameras that are registered on the ACT365 VCU now get filtered into a separate list called “Selected Cameras”, located at the top of the screen. There is space for four panels allocated to the four channels of a VCU.



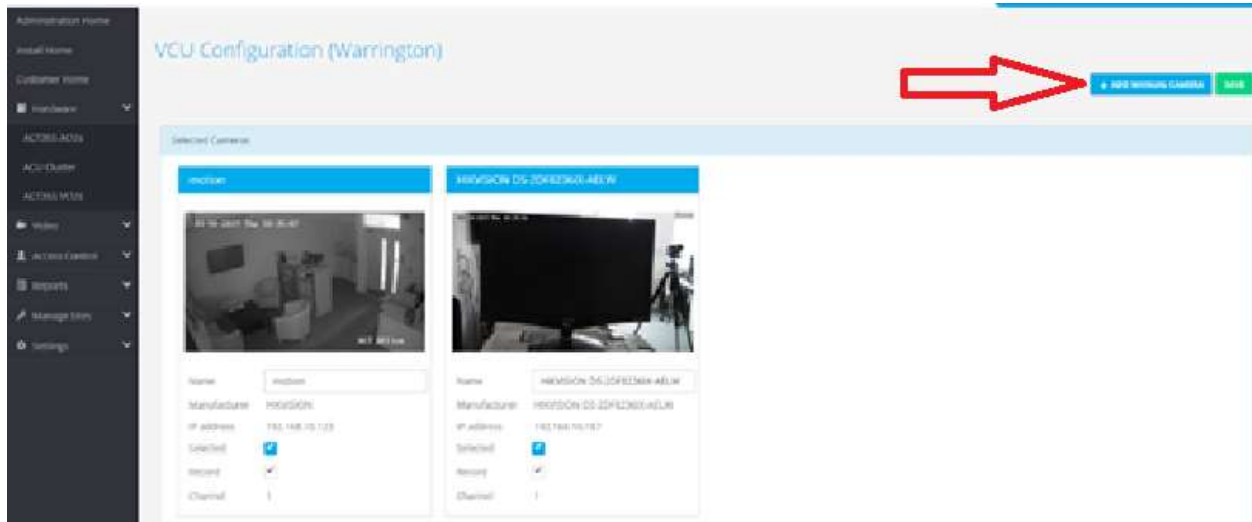
- All other discovered cameras are listed below in a separate list.



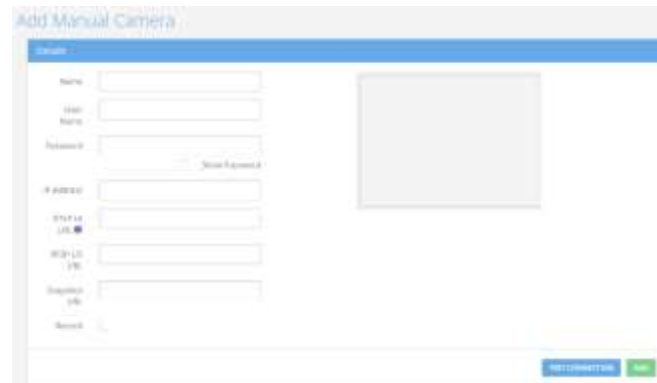
Note: if using Hikvision cameras with firmware version V5.5.0 or later the ONVIF feature may be disabled, See attached document on how to enable ONVIF in Hikvision cameras.

2. Add Cameras Manually

Cameras that cannot be automatically discovered and registered by the VCU can be added manually. From the ACT365 VCU Configuration Page select “ADD MANUAL CAMERA” on the top-right.



- Cameras not discovered by the ACT365-VCU can be added manually by filling out the manual add form.
- “TEST CONNECTION” returns a snapshot that also validates the camera URL and settings.
- “ADD” remotely configures the VCU with the configuration data in this form.



Note: Adding cameras manually will not set up the camera stream. This will still need to be adjusted manually via the camera’s configuration page. Please see camera manual for information.

How to do this: Recommended settings are 720p, 24fps, 1 GOV/IPS/I-Frame per second.

WARNING: Any settings outside of this range will cause performance and stability issues.

3. Motion Detection Status Added to Camera List Page

- Added new Motion Detection column.



4. Update to Camera Details Page

- Camera name can no longer be edited in the Camera Details page.
- Added local IP address of camera to the Camera Details page.



5. Video Test Page New Layout and Settings

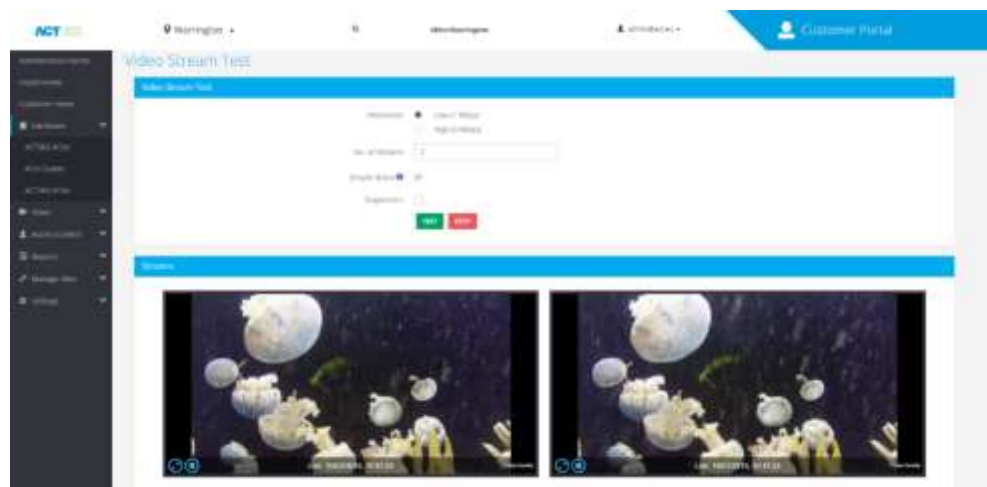
- From the diagnostic screen, the operator can monitor status of the VCU, including the last time it connected with the ACT365 Portal and other useful information such as IP address of the ACT365-VCU and version.
- The most useful feature is network diagnostics using the “Video Stream test” option.



- Video Stream test page is ideal for testing if the customer's network can handle the traffic demands from transmitting video over the network.

- You can stop all test feeds.

- Resolution can be changed for requested video.



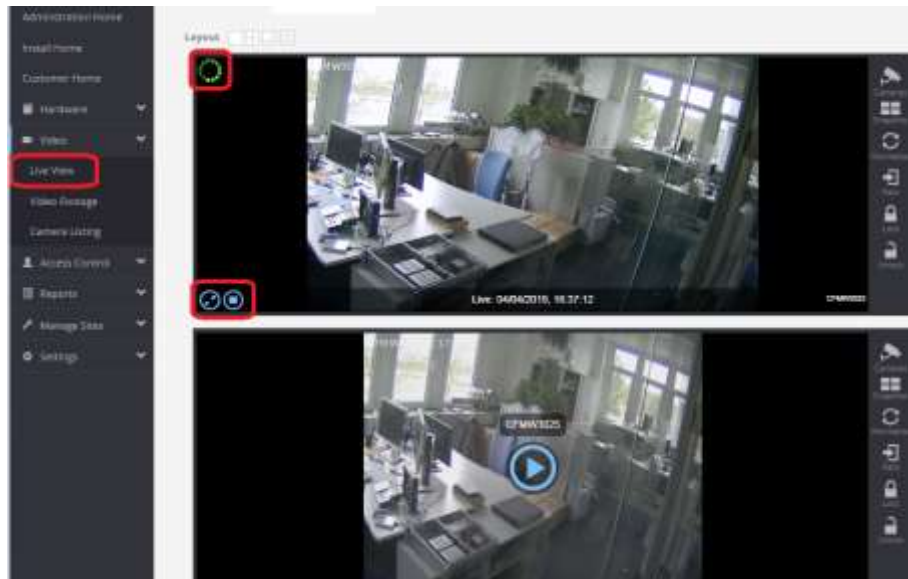
6. Live View New Layout

- Added new 6 and 9 way views.

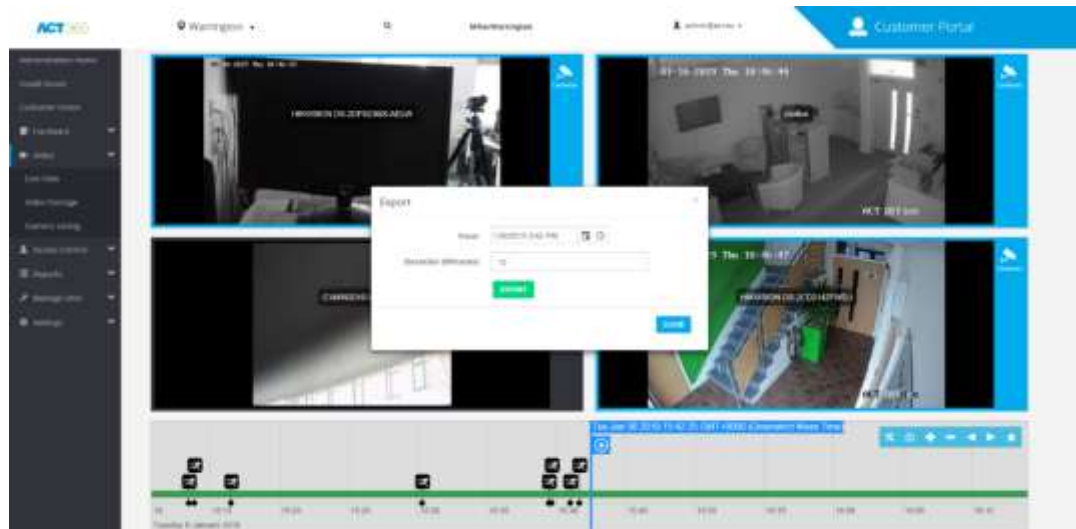


7. Upgraded Video Player on Live Video Screen

- Added new video player that reduces latency when starting to play live video.
- Icon to show video streaming is useful when no movement is in image.
- New player controls, new layout to maximize single window or to stop streaming.



8. Export Function and Buttons



- Export is now accessed through the export icon, not configuration icon.
- Export is related to the timeline, so now users can navigate to a time and then access the export dialog with the correct time already selected.
- Highlighted cameras show cameras selected for export like you would with the playback.

9. Motion Events Added to Log Event Page

Time	Event	Site	Location	Details	Number	Power	View
1/8/2019 11:07:07 PM	Low Power Detected	Warrington	West MSU			Low Power	
1/8/2019 1:44:55 PM	Motion Detected	Warrington	West MSU			Motion Detected	
1/8/2019 1:11:08 PM	Low Power Detected	Warrington	West MSU			Low Power	
1/8/2019 1:11:04 PM	Low Power Detected	Warrington	West MSU			Low Power	
1/8/2019 1:07:08 PM	Motion Detected	Warrington	West MSU			Motion Detected	
1/8/2019 1:06:55 PM	Motion Detected	Warrington	West MSU			Motion Detected	
1/8/2019 1:06:29 PM	Motion Detected	Warrington	West MSU			Motion Detected	
1/8/2019 1:06:24 PM	Motion Detected	Warrington	West MSU			Motion Detected	
1/8/2019 1:06:14 PM	Motion Detected	Warrington	West MSU			Motion Detected	

- Camera motion events are reported in the Log Event page.
- Camera event can be accessed by clicking the camera footage icon as per other events with linked video.

10. Video Timeline Improvements

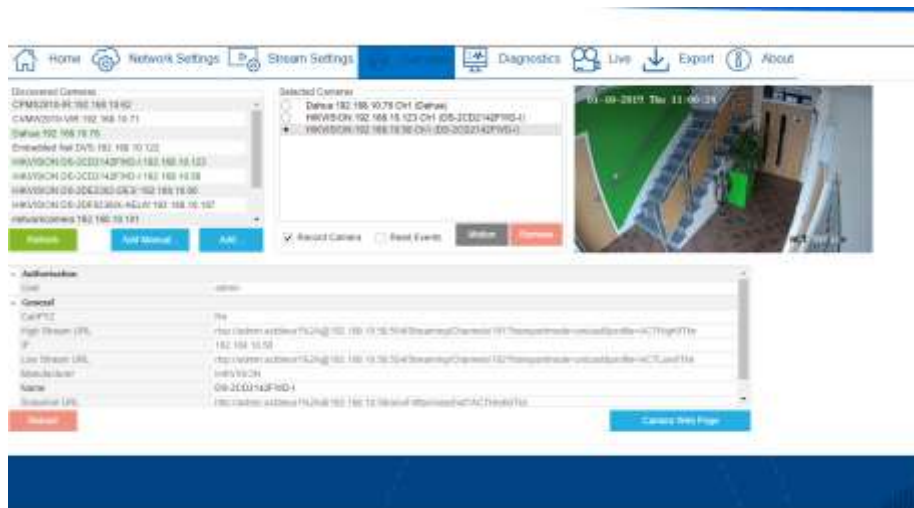


- New “free timeline” for navigation. There is no longer a set time range, simply drag the timeline to the required date and time.
- Camera playback is started via the play icon, not by clicking on the timeline.
- Events are visible with icons.
- Events are stackable for easy viewing when timeline is zoomed.
- Red line moving forward indicates “live time”.
- Events are displayed after the timeline movement has stopped to avoid “too many events” error message.

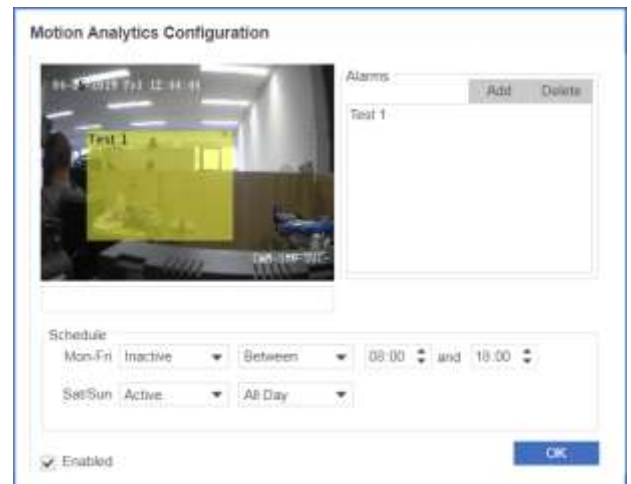
Note: Timeline events are grouped into a continuous bar. This is signifying that too many events are within that indicated time period. You can drill down further to see the events individually.

11. Motion Detection Setup

- Motion Detection is configured from the ACT365-VCU interface and requires ACT365-VCU **Version V8.1.r61** or later.

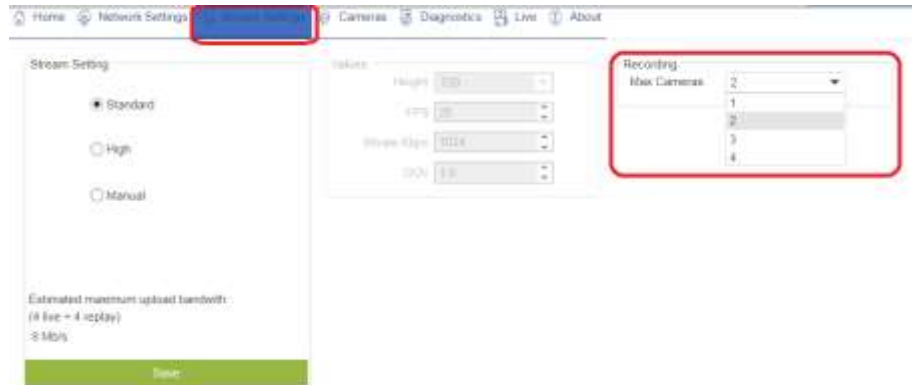


- Motion Detection is configured per channel or camera.
- Select the camera then press the motion button.
- Press the “Add Button” and follow the on-screen instructions to configure the motion area. Areas are defined by clicking two points on the image.
- Name the area; multiple areas can be defined.
- Configure scheduled time when motion will be reported.
- Enable and press “OK”.



12. Channel Setup

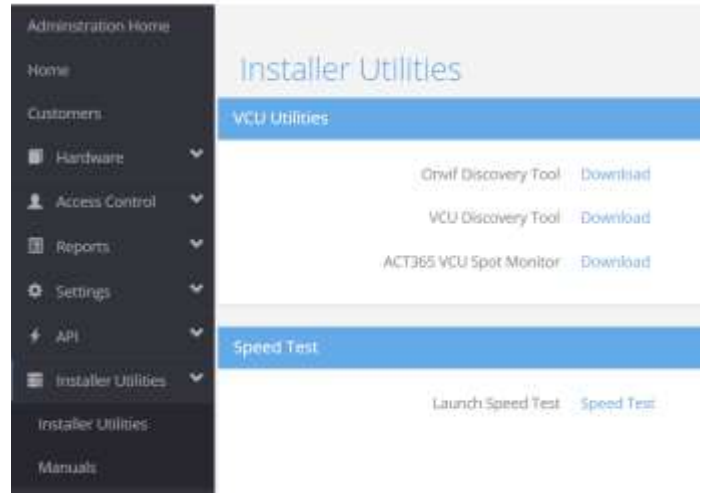
- The number of recorded channels can be configured between 1 and 4 (default to 4). For example, if two recording streams are selected, the entire hard drive's free space is divided between two cameras. Requires ACT365-VCU Version V8.1.r61 or later.



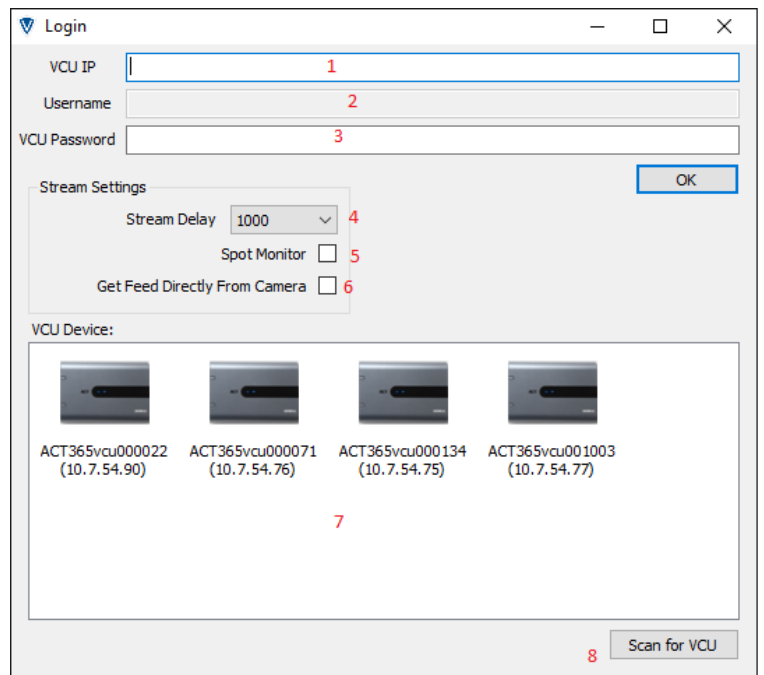
Note: To change the number of cameras on a live system, all cameras must be removed. All recordings will be deleted when removing cameras.

13. Spot Monitor

Spot Monitor allows customer stream live video to a dedicated computer application, I deal for retails space when video is streamed 24x7. The application can be downloaded from “Installer Utilities | Installer Utilities” menu on the Act365 portal.



- 1) Manual entry of VCU IP address if not discovered by the scan button (no 8).
- 2) Unused for VCU.
- 3) VCU password that you use to gain access to the Unit Web Page.
- 4) “Stream Delay”: this can be adjusted to 250ms (all values are in milliseconds).
- 5) “Spot Monitor” puts the software in full-screen mode automatically.
- 6) “Get Feed Directly From Camera” bypasses VCU unit (if unticked the VCU acts like a proxy to the video feed, and the video is sent from the VCU, not camera).
- 7) Discovered VCU’s on the network.
- 8) Click to scan for VCU units on the network.



Right click on camera feed to view menu.

- 1) Cameras are listed here, click on a camera to see the feed.
- 2) Close current camera view.
- 3) Maximize current camera into a single way full screen.
- 4) Logout of the VCU and return to main screen.

